

| The Emerald Challenge



**Grant
Information**

IQ
The Institute
of Quarrying

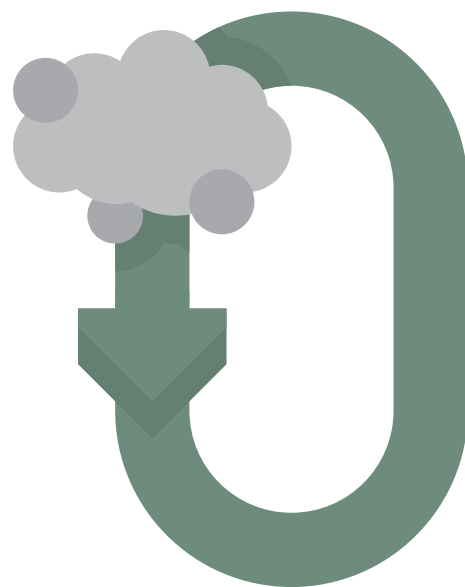


A new grant from IQ to support the mineral products industry in achieving its Net Zero Carbon ambitions.

Sustainability and the Mineral Products industry

Sustainability and decarbonisation have become the leading agenda for our society. The climate emergency is driving policies that support a circular economy, to be more efficient with our energy and use of resources and to improve biodiversity.

The Mineral Products industry will play a critical role in developing solutions that will put the UK on track to meeting its objective to be Net Zero Carbon by 2050 - in line with the COP27 agreement and the UN Sustainable Development Goals.



What is the Emerald Challenge?

The Emerald Challenge has been created to support and recognise IQ members as they develop projects and research ideas to help their organisations and the wider industry meet these global challenges.

The Emerald Challenge is a grant of £5,000 to be awarded annually to an IQ Technical Member (TMIQ, Member (MIQ) or Fellow (FIQ) to develop ideas that directly contribute to progress towards Net Zero Carbon.

What sort of projects could qualify for the grant?

The Emerald Challenge will consider any project that fits under the broader headline of sustainability, but typically would expect to see submissions in areas such as:

- Decarbonisation
- Energy efficiency
- Materials efficiency/circular economy
- Biodiversity and habitat improvement
- Pollution control/mitigation
- Water management



Projects that are developing new processes or concepts to help deliver better performance or delivering existing technologies within a new context for the sector. For example:

- Development of a research proposal for new developments in sustainability.
- Development of an existing idea to implementation phase.
- Implementation of a process/system within an organisation.
- Implementation of a campaign delivering improved sustainability/environmental performance.

These examples provide an indication of the types of projects that would be considered, but is not an exhaustive list.

The project must be unique work undertaken by the candidate and not work relating to an existing award or discipline.

So work being undertaken to achieve an academic qualification would not be eligible but could be used as a basis to progress that work to the next stage.



What is the application process?

The project is set out in two stages:

The first stage, part A, is the submission of a 1,000-word document which is a structured summary based on the judging criteria. It is highly recommended that you use the submission template as your guide to following the judging criteria set out below.

These initial submissions will be reviewed by a judging panel following the published criteria. Successful candidates will be invited to present their projects to the judging panel in the second stage (part B) of the process.



How will applications be judged?

The judging panel will consist of 6 individuals including the IQ President, IQ Chair, IQ CEO and representatives from the board of trustees, council and education team.

For the first stage (part A), project submissions will be evaluated against the following criteria with the weighting for each provided.:

Introduction

A clearly articulated rationale for why the project is important for the industry, how it could be applied and its potential impact. Weighting 15%.

Aims and Objectives

Definition of scope for the project through the identification of the specific research questions to be answered and what areas of the industry it hopes to advance i.e. environment, health & safety, people etc. Weighting 10%.



Research Methodology

Outline of the proposed research approach and methodology to be used in answering the project's aims and objectives. Weighting 10%.

Business Case

Plan for how the project will be delivered and the award grant will be used. Weighting 40%.

Project plan and budget allocation

A plan for how the project will be delivered and how the grant money will be used. Weighting 10%.

Proposed dissemination strategy and engagement work with IQ

Considered thought is given as to how the entrant will provide project updates and results to IQ and its members. Weighting 15%.

For successful applicants invited to attend part B of the process, the core criteria above remain a key part of the overall evaluation with additional consideration given to the presentation performance.

Further information and guidance will be given to applicants when notified of their progress.



Part B applicants will be judged on the following criteria:

Introduction: Weighting 15%

Aims and Objectives: Weighting 10%

Development of business case: Weighting 30%

Conclusion and Recommendations: Weighting 15%

Body language and audience engagement: Weighting 5%

Structure and communication of ideas: Weighting 5%

Pacing and timing of presentation: Weighting 5%

Responses to Q&A: Weighting 15%





Grant Submission Process and Deadlines

Submit your 1,000-word summary of your project using the [submission template](#) and sending it to emeraldchallenge@quarrying.org.

It is recommended that you use the submissions template as your guide for completing your submissions. Submissions will be accepted in word or pdf document format, alternatively, a voice-recorded summary can also be provided. Voice recordings should be 7-8 minutes long.

Ensure that your initial submission includes all the aspects listed within the criteria. When sending in your submission, ensure that you include:

- **Your Full Name**
- **Current Job Title**
- **Preferred Email**
- **Project Sponsor** (This is the name and job title of the person within your organisation that will support you in completing the research project.)
- **IQ Membership Number**
- **Employer**
- **Contact Number**



Project details will be treated with confidentiality throughout the judging process and any data shared within the project submission will be covered by the IQ privacy policy.

The winning entry will be required to share the project results with IQ, which will be in the form of a paper and presentation of their results to be delivered online, in print, and through Branch and IQ events.

The project must be delivered within 18 months of receiving the award.

Contact us for further inquiries

Sarah Fry

Head of Membership and Marketing

sarah.fry@quarrying.org

+44 (0)115 972 999



The Institute
of Quarrying

www.quarrying.org